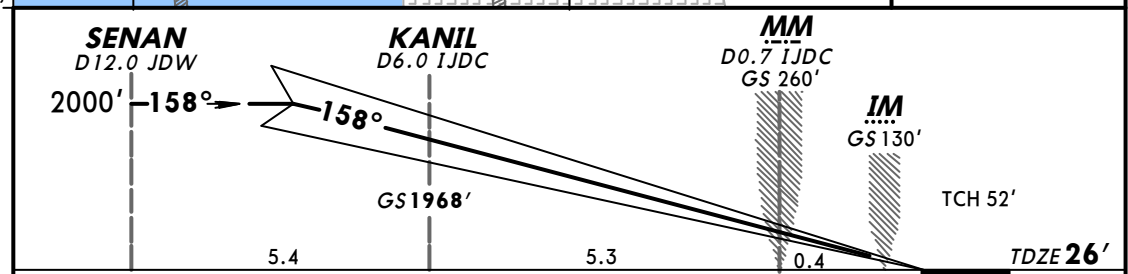
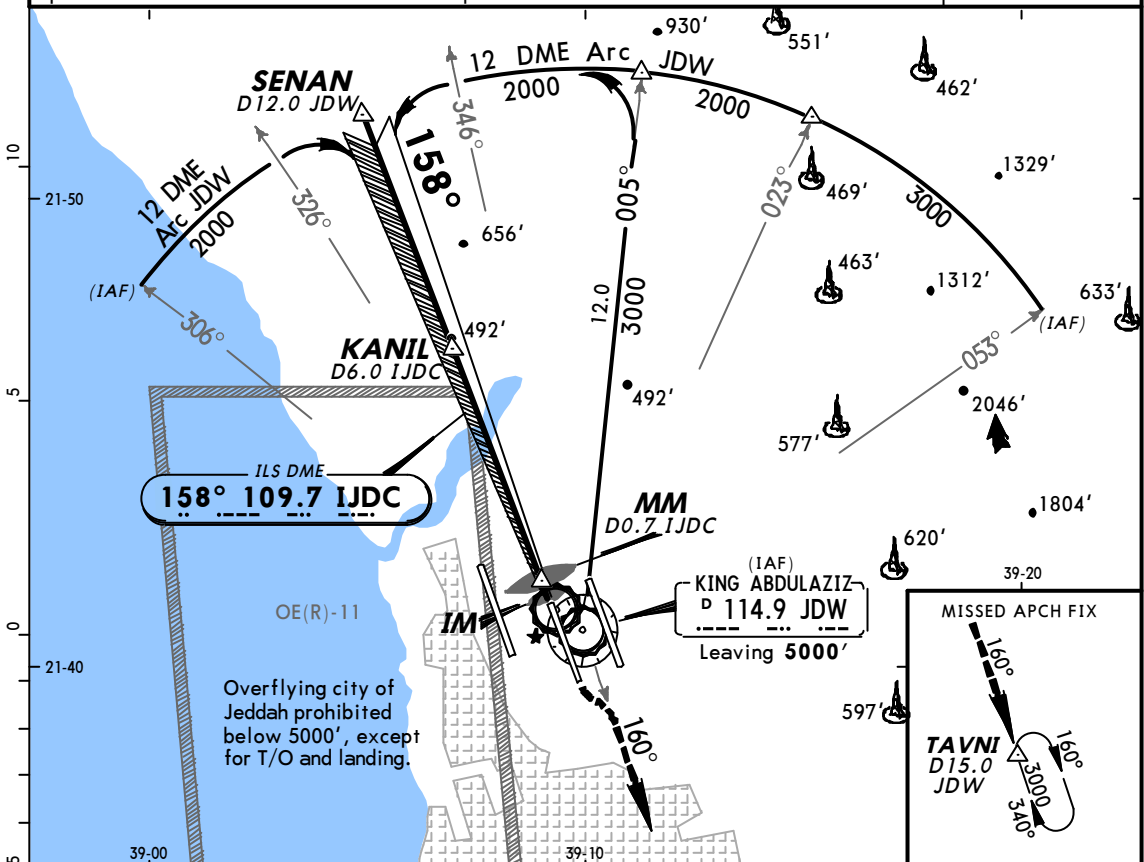


BRIEFING STRIP™	ATIS	JEDDAH Approach(R)			JEDDAH Tower	Ground
	114.9	(Initial contact) 119.1	(APP) 124.0	(Final apch) 123.8	118.2	121.6
LOC IJDC	Final Apch Crs	GS KANIL	CAT II ILS RA 101'		Apt Elev 48'	
109.7	158°	1968'	DA(H) 126'(100')		TDZE 26'	
MISSED APCH: Climb via R-160 JDW to 3000' to TAVNI/D15.0 JDW and hold, or as directed.						
Alt Set: hPa		TDZ Elev: 1 hPa	Trans level: FL 150		Trans alt: 13000'	
Special Aircrew & Aircraft Certification Required.						MSA JDW VOR



Gnd speed-Kts	70	90	100	120	140	160		3000' JDW via 114.9 LT R-160
Gs	3.00°	377	485	539	647	755		

STRAIGHT-IN LANDING RWY 16C CAT II ILS	
RA 101' DA(H) 126'(100')	RA 166' DA(H) 176'(150')
RVR 350m	RVR 500m

A
M
E
N
D
9