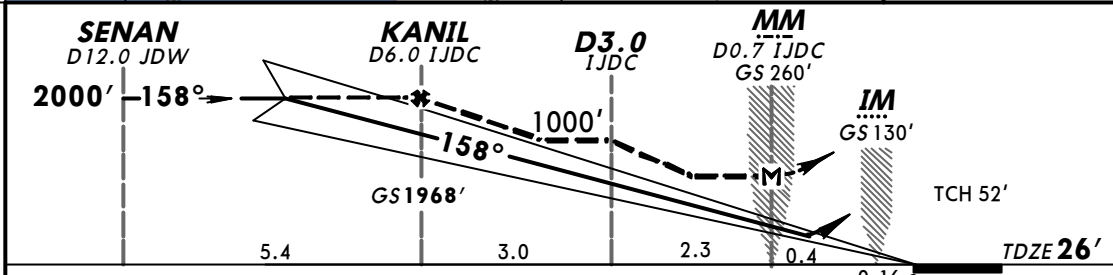
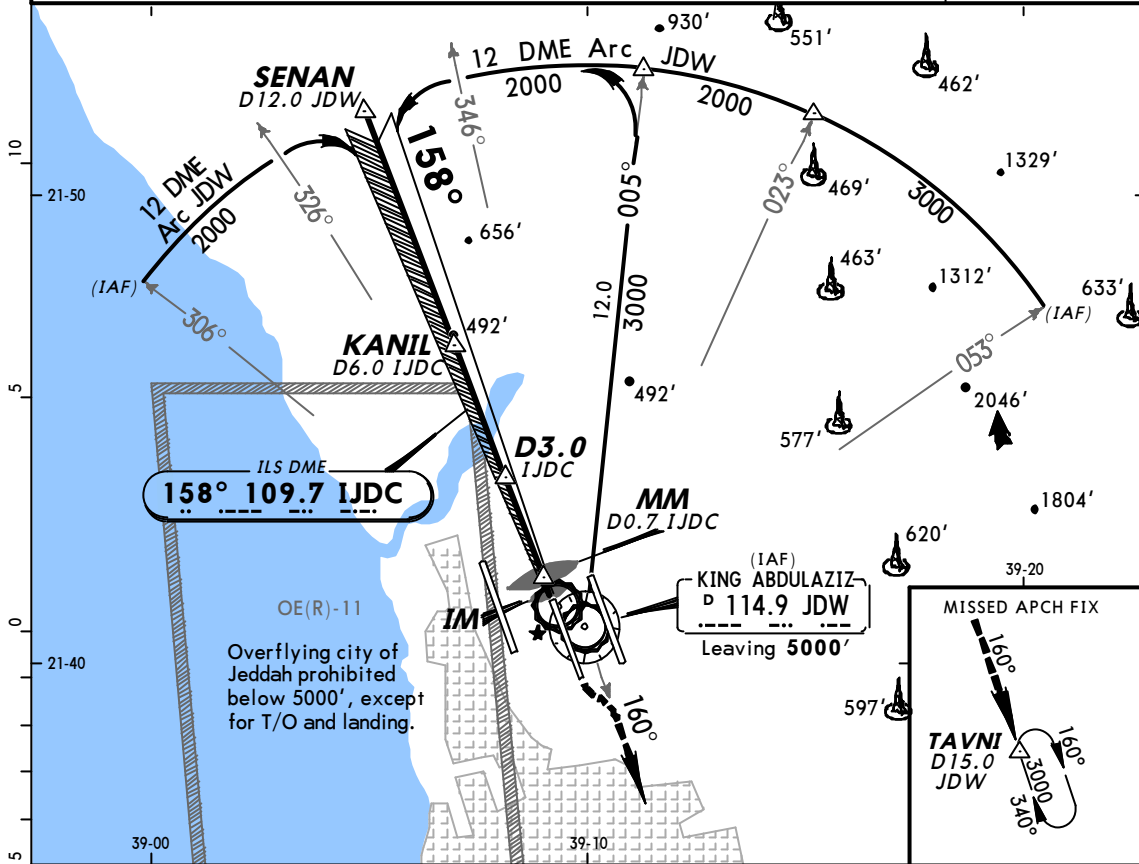


OEJN/JED
KING ABDULAZIZ INTL

JEPPESEN 20 SEP 02 (11-1) Eff 3 Oct

JEDDAH, SAUDI ARABIA
ILS DME Rwy 16C

ATIS 114.9	JEDDAH Approach(R) (Initial contact) 119.1	(APP) 124.0	(Final apch) 123.8	JEDDAH Tower 118.2	Ground 121.6
LOC IJDC 109.7	Final Apch Crs 158°	GS KANIL 1968'	ILS DA(H) 226' (200')	Apt Elev 48' TDZE 26'	
MISSED APCH: Climb via R-160 JDW to 3000' to TAVNI/D15.0 JDW and hold, or as directed.					
Alt Set: hPa		TDZ Elev: 1 hPa	Trans level: FL 150	Trans alt: 13000'	MSA JDW VOR



Gnd speed-Kts	70	90	100	120	140	160		3000' JDW via 114.9 LT R-160	
GS	3.00°	377	485	539	647	755			862
MAP at D0.7 IJDC									

STRAIGHT-IN LANDING RWY 16C				LOC (GS out)		CIRCLE-TO-LAND	
ILS				DA(H) 226' (200')		MDA(H) 420' (394')	
FULL		TDZ or CL out	ALS out	ALS out		NOT AUTHORIZED	
A							
B	RVR 550m VIS 800m	RVR 720m VIS 800m	1200m	RVR 720m VIS 800m	RVR 1500m VIS 1600m		
C				1200m	RVR 1800m VIS 2000m		
D							

CHANGES: IAF. Minimums.

© JEPPESEN SANDERSON, INC., 2000, 2002. ALL RIGHTS RESERVED.