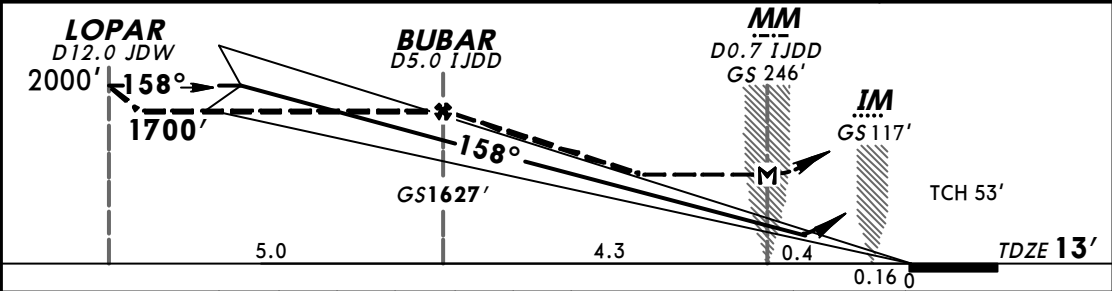
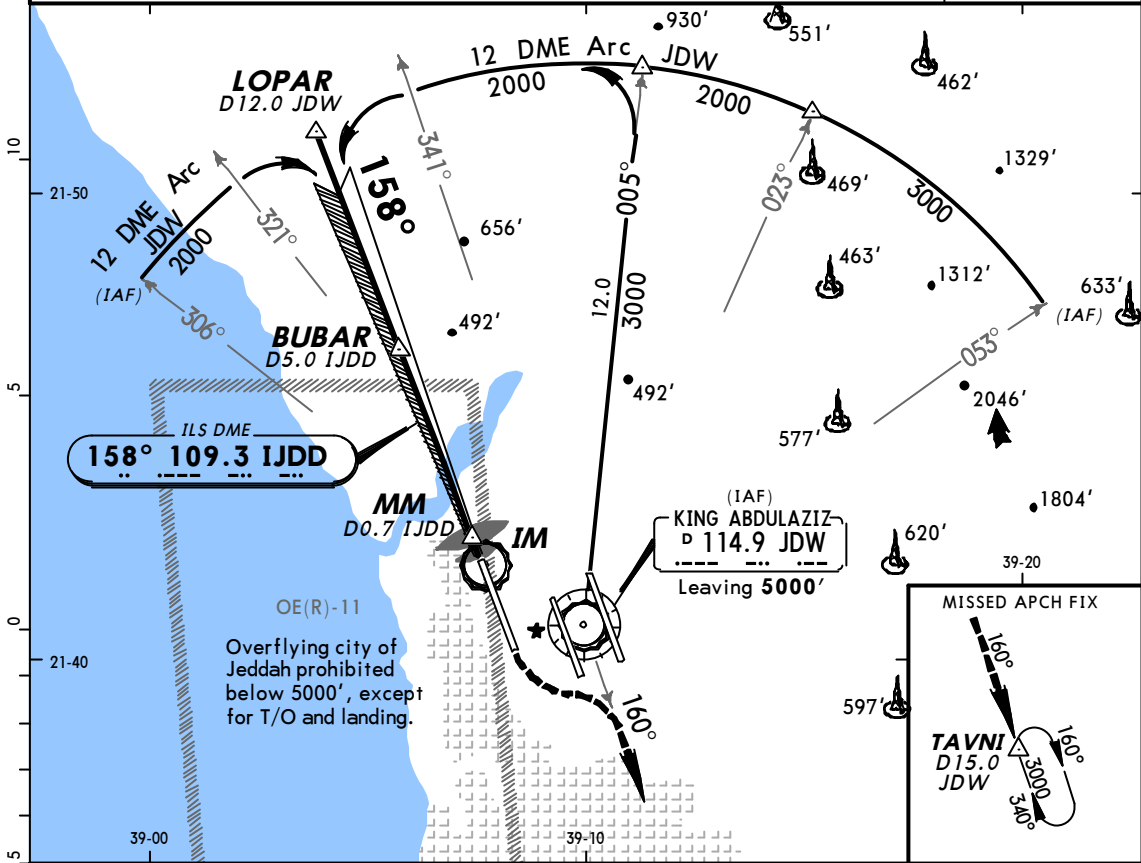
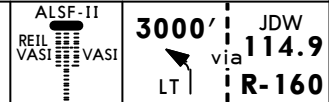


BRIEFING STRIP™	ATIS	JEDDAH Approach(R)		JEDDAH Tower	Ground	
	114.9	(Initial contact) 119.1	(APP) 124.0	(Final apch) 123.8	118.2	121.6
	LOC IJDD 109.3	Final Apch Crs 158°	GS BUBAR 1627'	ILS DA(H) 213' (200')	Apt Elev 48' TDZE 13'	
MISSED APCH: Climbing turn LEFT to 3000' via R-160 JDW to TAVNI/D15.0 JDW and hold, or as directed.						
Alt Set: hPa		TDZ Elev: 0 hPa	Trans level: FL 150	Trans alt: 13000'	MSA JDW VOR	



Gnd speed-Kts	70	90	100	120	140	160
GS	3.00°	377	485	539	647	862
MAP at D0.7 IJDD						



STRAIGHT-IN LANDING RWY 16R				CIRCLE-TO-LAND	
ILS			LOC (GS out)		
DA(H) 213' (200')			MDA(H) 420' (407')		
FULL		TDZ or CL out	ALS out	ALS out	
A				RVR 720m	RVR 1500m
B				VIS 800m	VIS 1600m
C	RVR 550m	RVR 720m	1200m		
D	VIS 800m	VIS 800m		1200m	RVR 1800m
					VIS 2000m
				NOT AUTHORIZED	