

OEJN/JED

KING ABDULAZIZ INTL

20 SEP 02
Eff 3 Oct

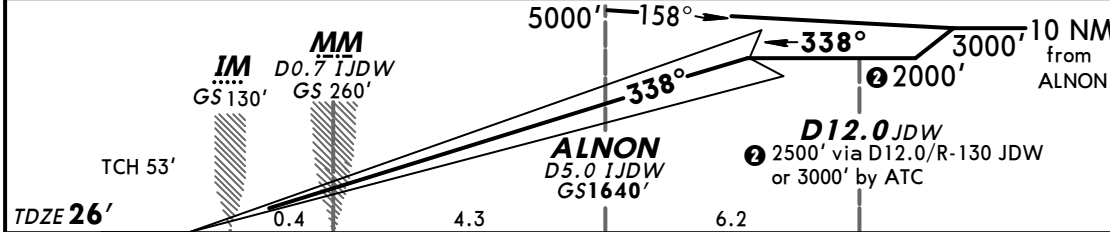
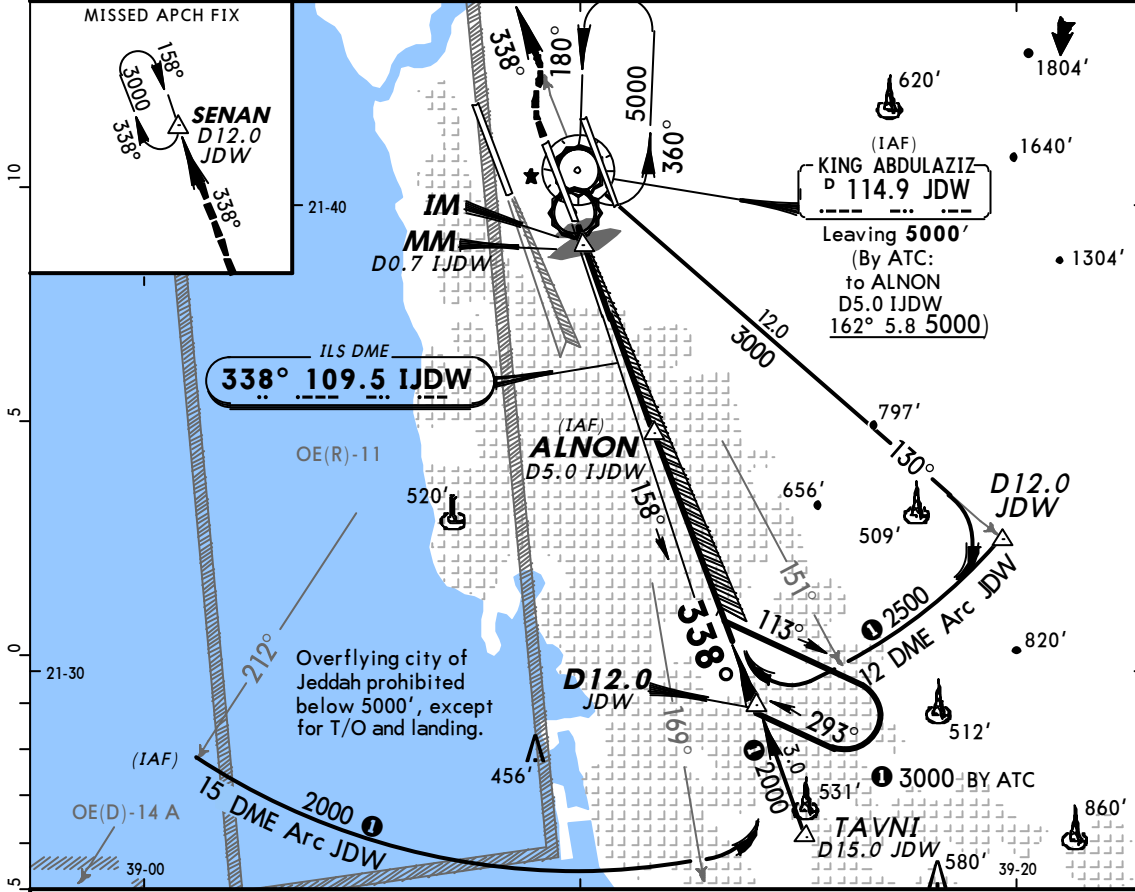
JEPPESSEN

11-4A

JEDDAH, SAUDI ARABIA
CAT II ILS DME Rwy 34C

BRIEFING STRIP™

ATIS 114.9	JEDDAH Approach(R) (Initial contact) 119.1 (APP) 124.0 (Final apch) 123.8		JEDDAH Tower 118.2	Ground 121.6
LOC IJDW 109.5	Final Apch Crs 338°	GS ALNON 1640'	CAT II ILS RA 98' DA(H) 126' (100')	Apt Elev 48' TDZE 26'
<p>MISSED APCH: Climb to 3000' via R-338 JDW to SENAN/D12.0 JDW and hold; or when directed climb to 3000' via R-338 JDW, then climbing turn RIGHT to 5000' to JDW VOR and hold.</p> <p>Alt Set: hPa TDZ Elev: 1 hPa Trans level: FL 150 Trans alt: 13000'</p> <p>1. Special Aircrew & Aircraft Certification Required. 2. Simultaneous approach authorized with rwy 34L in VMC only.</p>				<p>MSA JDW VOR</p>



Gnd speed-Kts	70	90	100	120	140	160		3000' JDW via 114.9 RT R-338
GS	3.00°	377	485	539	647	755		

STRAIGHT-IN LANDING RWY 34C CAT II ILS	
RA 98' DA(H) 126' (100')	RA 147' DA(H) 176' (150')

RVR 350m	RVR 500m
-----------------	-----------------

AMEND 9

CHANGES: Procedure.

© JEPPESSEN SANDERSON, INC., 2000, 2002. ALL RIGHTS RESERVED.