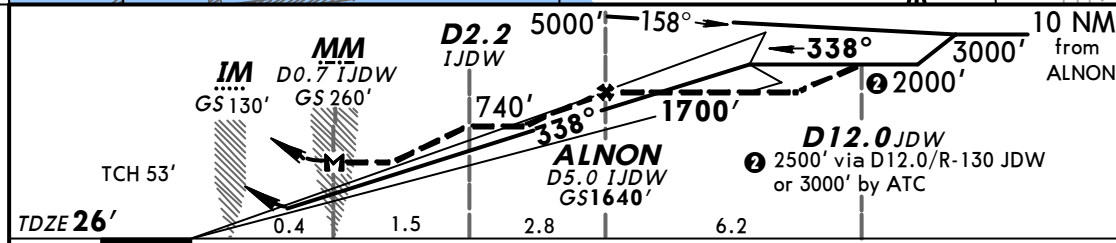
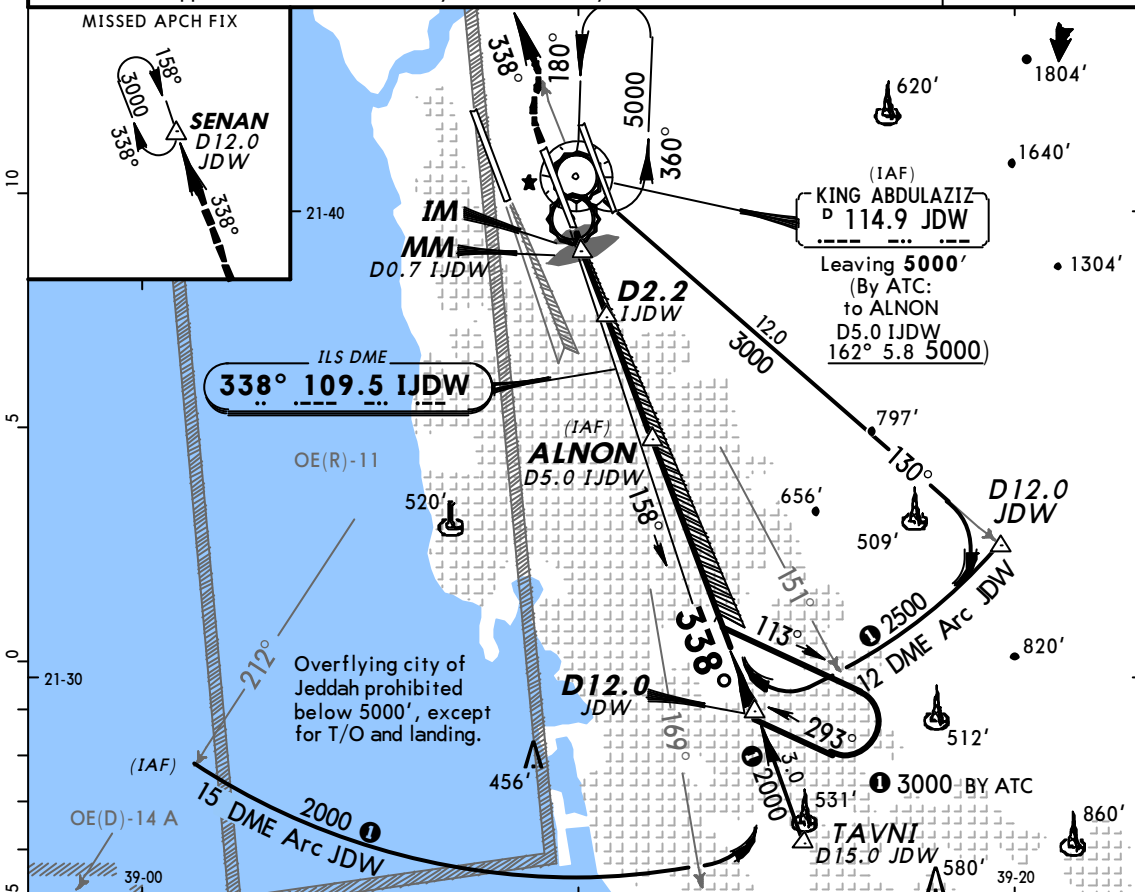


ATIS 114.9	JEDDAH Approach(R) (Initial contact) 119.1 (APP) 124.0 (Final apch) 123.8	JEDDAH Tower 118.2	Ground 121.6	
LOC IJDW 109.5	Final Apch Crs 338°	GS ALNON 1640'	ILS DA(H) 226' (200')	
Apt Elev 48' TDZE 26'				
<p>MISSED APCH: Climb to 3000' via R-338 JDW to SENAN/D12.0 JDW and hold; or when directed climb to 3000' via R-338 JDW, then climbing turn RIGHT to 5000' to JDW VOR and hold.</p>				
Alt Set: hPa		TDZ Elev: 1 hPa	Trans level: FL 150	Trans alt: 13000'
Simultaneous approach authorized with rwy 34L in VMC only.				MSA JDW VOR



Gnd speed-Kts	70	90	100	120	140	160	ALSF-II VASI VASI 3000' JDW via 114.9 RT R-338
GS	3.00°	377	485	539	647	755	
MAP at D0.7 IJDW							

STRAIGHT-IN LANDING RWY 34C				CIRCLE-TO-LAND	
ILS				LOC (GS out)	
DA(H) 226' (200')				MDA(H) 420' (394')	
FULL		TDZ or CL out	ALS out	ALS out	
A				A	NOT AUTHORIZED
B	RVR 550m	RVR 720m	1200m	B	
C	VIS 800m	VIS 800m		C	
D			1200m	D	
					RVR 720m VIS 800m
					RVR 1500m VIS 1600m
					RVR 1800m VIS 2000m