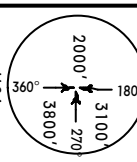


JEDDAH Approach (R)
124.0 **48**

Ap / Elev
 Trans level: FL150
 altitude as a part of the SID procedure. The revised SID remains in effect unless specifically cancelled by ATC.

RADAR DEPARTURE



ALFA ONE (ALFA 1)
 BRAVO ONE (BRAVO 1)
 RWYS 34L/C/R, 16L/C/R
 RADAR DEPARTURES



NOT TO SCALE

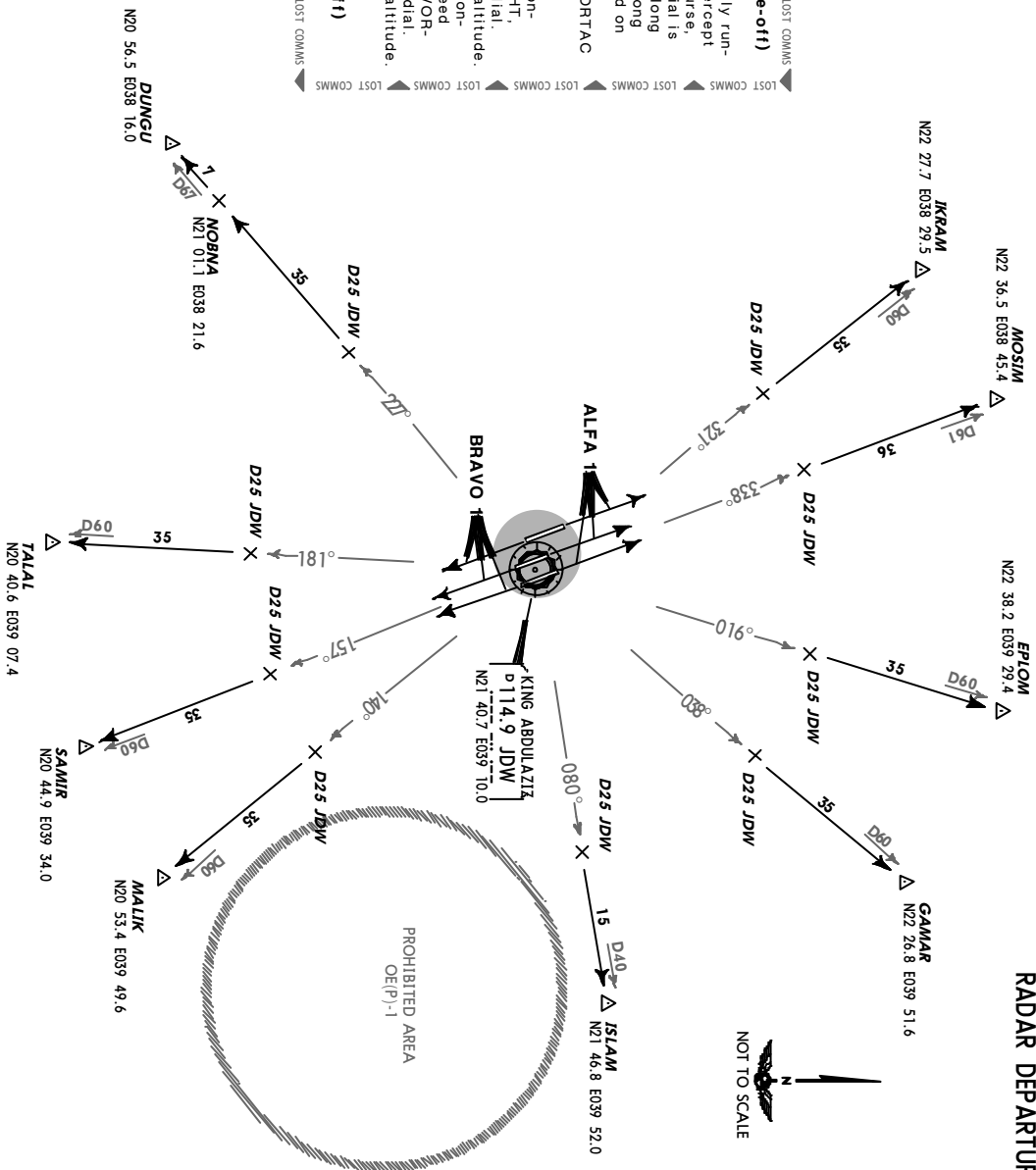
(When occurring within less than ten minutes after take-off)
ALFA 1

If on-course radial is less than 105° from runway track, fly runway track for 5 minutes, turn LEFT/RIGHT, fly a 30° intercept heading to the on-course radial. When established on course, climb to the flight-planned altitude. If the on-course radial is more than 105° from runway track, turn LEFT, proceed along 15 DME arc; intercept JDW R-227, turn LEFT, proceed along 25 DME arc. Intercept on-course radial. When established on course, climb to the flight-planned altitude. Procedure not authorized for Departures south of JDW VORTAC when JDW DME inoperative.

BRAVO 1

If on-course radial is less than 70° from runway track, continue on runway track until JDW 25 DME, turn LEFT/RIGHT, proceed along 25 DME arc to intercept the on-course radial. When established on course, climb to the flight-planned altitude. If on-course radial is more than 70° from runway track, continue on runway track to JDW 20 DME, turn RIGHT, proceed along 20 DME arc. Intercept JDW R-212 inbound to JDW VORTAC. After passing JDW VORTAC, intercept on-course radial. When established on course, climb to the flight-planned altitude. Procedure not authorized when JDW DME inoperative.

(When occurring ten minutes or more after take-off)
 Follow enroute communications failure procedure.
 LOST COMMS



SID	RWY	ROUTING
ALFA 1	34L/C/R	Climb on runway track, maintain 5000', expect radar vectors.
BRAVO 1	16L/C/R	Climb on runway track, maintain 5000', expect radar vectors.