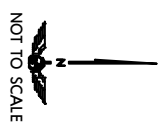
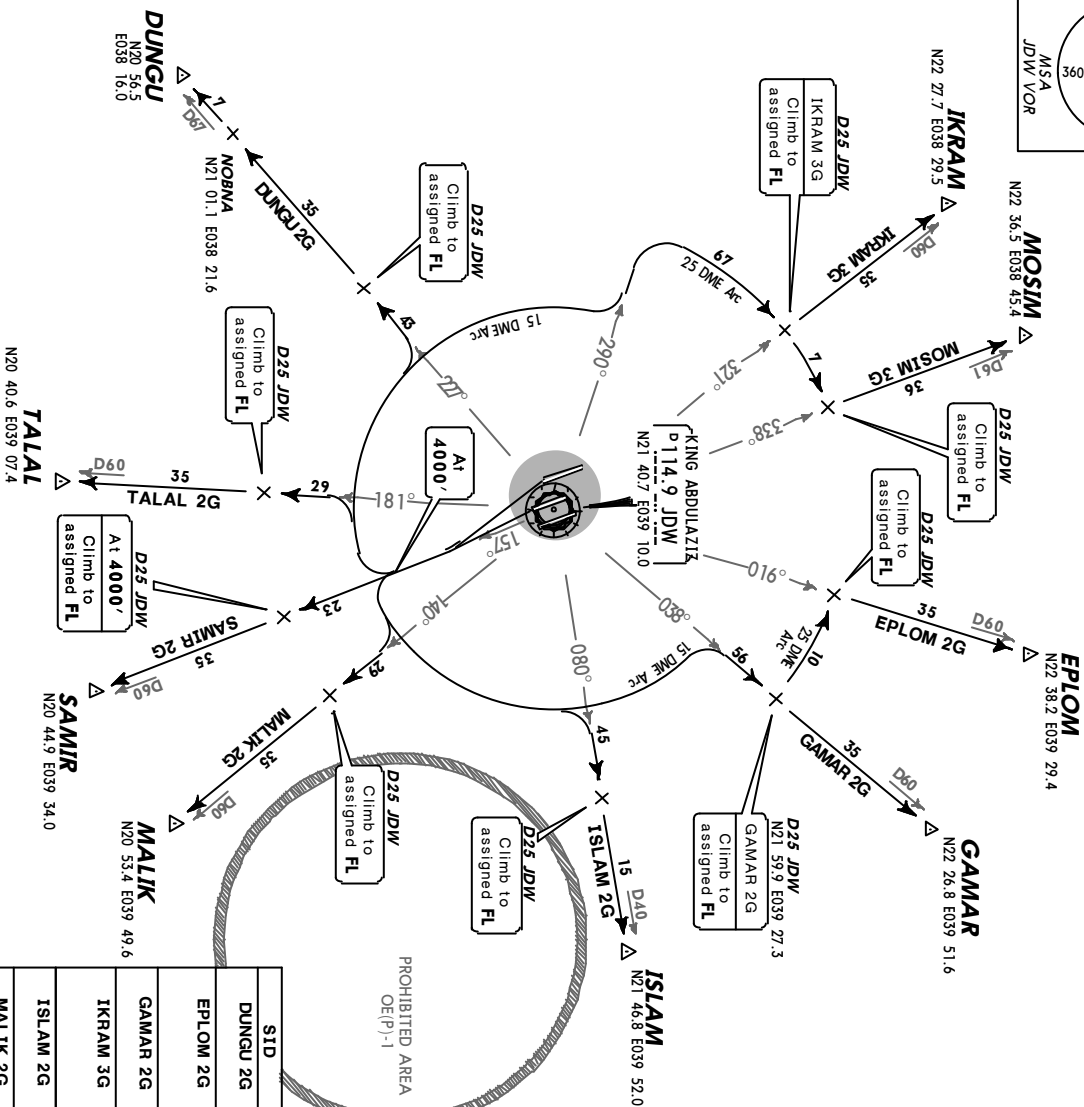
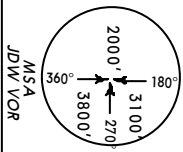


JEDDAH Approach (R) **124.0** Apt Elev **48'** Trans level: FL150 Trans alt: 13000' Contact JEDDAH Approach immediately after take-off.



- DUNGU TWO GOLF (DUNGU 2G) [DUNG2G]
- EPLM TWO GOLF (EPLM 2G) [EPL02G]
- GAMAR TWO GOLF (GAMAR 2G) [GAMA2G]
- IKRAM THREE GOLF (IKRAM 3G) [IKRA3G]
- ISLAM TWO GOLF (ISLAM 2G) [ISLA2G]
- MALIK TWO GOLF (MALIK 2G) [MALI2G]
- MOSIM THREE GOLF (MOSIM 3G) [MOSI3G]
- SAMIR TWO GOLF (SAMIR 2G) [SAMI2G]
- TALAL TWO GOLF (TALAL 2G) [TALA2G]
- RWYS 16C/R DEPARTURES

These SIDs require a minimum climb gradient of 286' per nm.

Gnd speed-KT	75	100	150	200	250	300
286' per nm	358	477	715	953	1192	1430

If unable to comply with SID advise ATC prior to take-off.

SID	ROUTING
DUNGU 2G	Climb on JDW R-157 to 4000', turn RIGHT, proceed along JDW 15 DME arc, intercept JDW R-227 to DUNGU.
EPLM 2G	Climb on JDW R-157 to 4000', turn LEFT, proceed along JDW 15 DME arc, intercept JDW R-038, turn LEFT, proceed along JDW 25 DME arc, intercept JDW R-016 to EPLM.
GAMAR 2G	Climb on JDW R-157 to 4000', turn LEFT, proceed along JDW 15 DME arc, intercept JDW R-038 to GAMAR.
IKRAM 3G	Climb on JDW R-157 to 4000', turn RIGHT, proceed along JDW 15 DME arc, intercept JDW R-290, turn RIGHT, proceed along JDW 25 DME arc, intercept JDW R-321 to IKRAM.
ISLAM 2G	Climb on JDW R-157 to 4000', turn LEFT, proceed along JDW 15 DME arc, intercept JDW R-080 to ISLAM.
MALIK 2G	Climb on JDW R-157 to 4000', turn LEFT, proceed along JDW 15 DME arc, intercept JDW R-140 to MALIK.
MOSIM 3G	Climb on JDW R-157 to 4000', turn RIGHT, proceed along JDW 15 DME arc, intercept JDW R-290, turn RIGHT, proceed along JDW 25 DME arc, intercept JDW R-338 to MOSIM.
SAMIR 2G	Climb on JDW R-157 to 4000', maintain 4000' to D25 JDW, then to SAMIR, intercept R-181 to TALAL.
TALAL 2G	Climb on JDW R-157 to 4000', turn RIGHT, proceed along JDW 15 DME arc, intercept R-181 to TALAL.