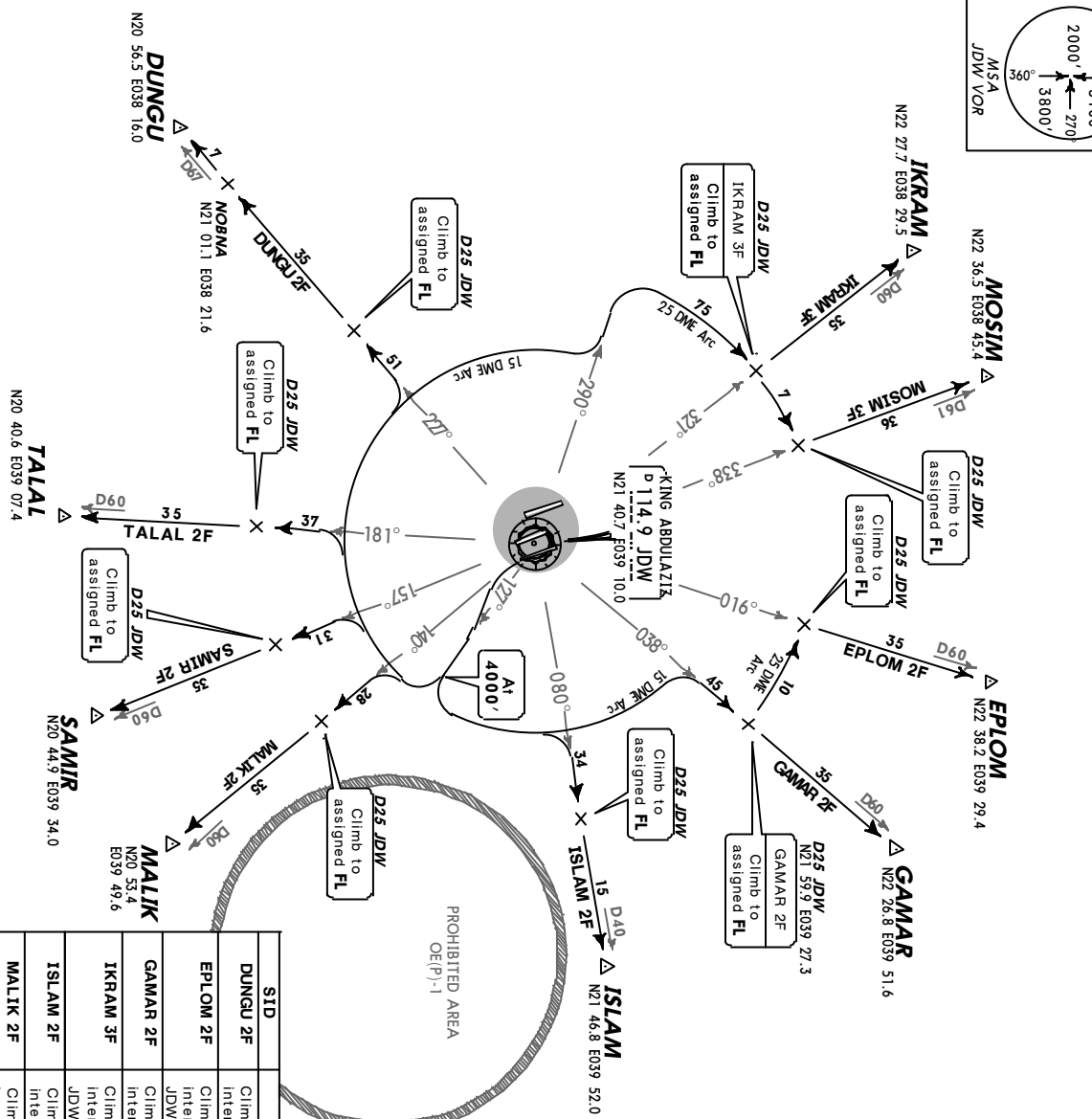
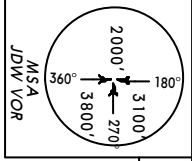


JEDDAH Approach (R) **124.0** Apt Elev **48'** Trans level: FL150 Trans alt: 13000' Contact JEDDAH Approach immediately after take-off.



- DUNGU TWO FOXTROT (DUNGU 2F) [DUNG2F]
- EPLOM TWO FOXTROT (EPLOM 2F) [EPL02F]
- GAMAR TWO FOXTROT (GAMAR 2F) [GAMA2F]
- IKRAM THREE FOXTROT (IKRAM 3F) [IKRA3F]
- ISLAM TWO FOXTROT (ISLAM 2F) [ISLA2F]
- MALIK TWO FOXTROT (MALIK 2F) [MALI2F]
- MOSIM THREE FOXTROT (MOSIM 3F) [MOSI3F]
- SAMIR TWO FOXTROT (SAMIR 2F) [SAMI2F]
- TALAL TWO FOXTROT (TALAL 2F) [TALA2F]
- RWY 16L DEPARTURES

These SIDs require a minimum climb gradient of 286' per nm.

Gnd speed-KT	75	100	150	200	250	300
286' per nm	358	477	715	953	1192	1430

If unable to comply with SID advise ATC prior to take-off.

SID	ROUTING
DUNGU 2F	Climb on JDW R-127 to 4000', turn RIGHT, proceed along JDW 15 DME arc, intercept JDW R-227 to DUNGU.
EPLOM 2F	Climb on JDW R-127 to 4000', turn LEFT, proceed along JDW 15 DME arc, intercept JDW R-038, turn LEFT proceed along JDW 25 DME arc, intercept JDW R-016 to EPLOM.
GAMAR 2F	Climb on JDW R-127 to 4000', turn LEFT, proceed along JDW 15 DME arc, intercept JDW R-038 to GAMAR.
IKRAM 3F	Climb on JDW R-127 to 4000', turn RIGHT, proceed along JDW 15 DME arc, intercept JDW R-290, turn RIGHT, proceed along JDW 25 DME arc, intercept JDW R-321 to IKRAM.
ISLAM 2F	Climb on JDW R-127 to 4000', turn LEFT, proceed along JDW 15 DME arc, intercept JDW R-080 to ISLAM.
MALIK 2F	Climb on JDW R-127 to 4000', turn RIGHT, proceed along JDW 15 DME arc, intercept JDW R-127 to MALIK.
MOSIM 3F	Climb on JDW R-127 to 4000', turn RIGHT, proceed along JDW 15 DME arc, intercept JDW R-290, turn RIGHT, proceed along JDW 25 DME arc, intercept JDW R-338 to MOSIM.
SAMIR 2F	Climb on JDW R-127 to 4000', turn RIGHT, proceed along JDW 15 DME arc, intercept JDW R-157 to SAMIR.
TALAL 2F	Climb on JDW R-127 to 4000', turn RIGHT, proceed along JDW 15 DME arc, intercept R-181 to TALAL.