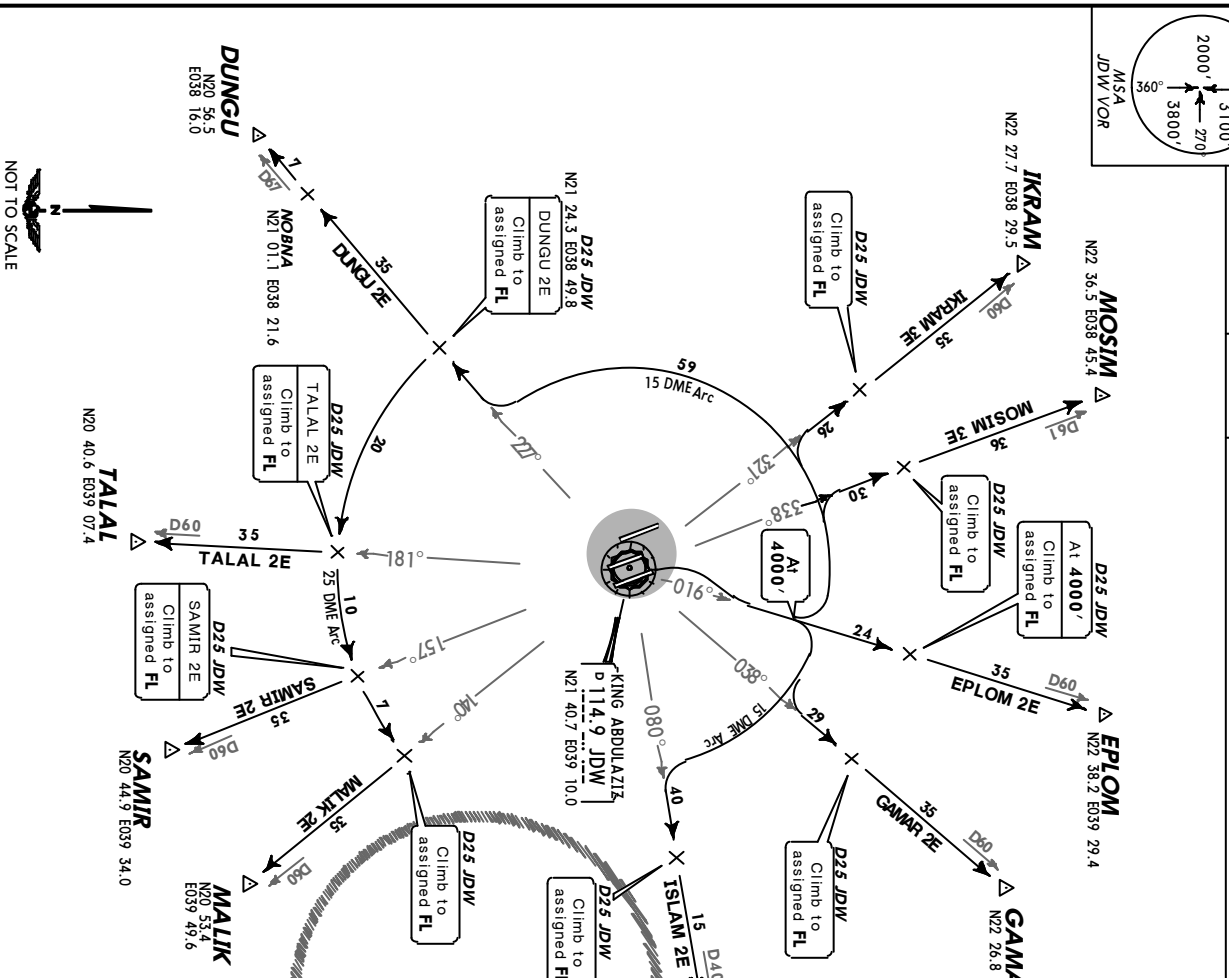
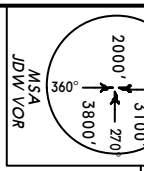


JEDDAH Approach (R) **124.0** Apt Elev **48'** Trans level: FL150 Trans alt: 13000' Contact JEDDAH Approach immediately after take-off.



DUNGU TWO ECHO  
(DUNGU 2E) [DUNG2E]  
EPLOM TWO ECHO  
(EPLOM 2E) [EPL02E]  
GAMAR TWO ECHO  
(GAMAR 2E) [GAMA2E]  
IKRAM THREE ECHO  
(IKRAM 3E) [IKRA3E]  
ISLAM TWO ECHO  
(ISLAM 2E) [ISLA2E]  
MALIK TWO ECHO  
(MALIK 2E) [MALI2E]  
MOSIM THREE ECHO  
(MOSIM 3E) [MOSI3E]  
SAMIR TWO ECHO  
(SAMIR 2E) [SAMI2E]  
TALAL TWO ECHO  
(TALAL 2E) [TALA2E]  
RWY 34R DEPARTURES

These SIDs require a minimum climb gradient of 286' per nm.  
Gnd speed-KT 75 100 150 200 250 300  
286' per nm 358 477 715 953 1192 1430  
If unable to comply with SID advise ATIS prior to take-off.

SID	ROUTING
DUNGU 2E	Climb on JDW R-016 to 4000', turn LEFT, proceed along JDW 15 DME arc. Intercept JDW R-227 to DUNGU.
EPLOM 2E	Climb on JDW R-016 to 4000', maintain 4000' to D25 JDW, then to EPLOM.
GAMAR 2E	Climb on JDW R-016 to 4000', turn RIGHT, proceed along JDW 15 DME arc. Intercept JDW R-038 to GAMAR.
IKRAM 3E	Climb on JDW R-016 to 4000', turn LEFT, proceed along JDW 15 DME arc. Intercept JDW R-321 to IKRAM.
ISLAM 2E	Climb on JDW R-016 to 4000', turn RIGHT, proceed along JDW 15 DME arc. Intercept JDW R-080 to ISLAM.
MALIK 2E	Climb on JDW R-016 to 4000', turn LEFT, proceed along JDW 15 DME arc. Intercept JDW R-140 to MALIK.
MOSIM 3E	Climb on JDW R-306 to 4000', turn LEFT, proceed along JDW 15 DME arc. Intercept JDW R-338 to MOSIM.
SAMIR 2E	Climb on JDW R-016 to 4000', turn LEFT, proceed along JDW 15 DME arc. Intercept JDW R-227, turn LEFT, proceed along JDW 25 DME arc. Intercept JDW R-157 to SAMIR.
TALAL 2E	Climb on JDW R-016 to 4000', turn LEFT, proceed along JDW 15 DME arc. Intercept JDW R-227, turn LEFT, proceed along JDW 25 DME arc. Intercept R-181 to TALAL.