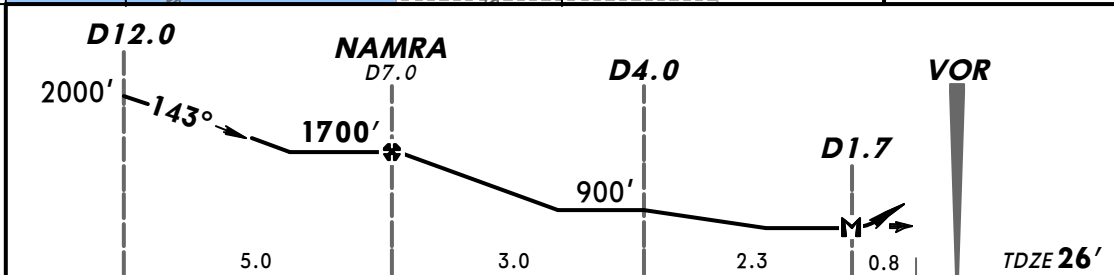
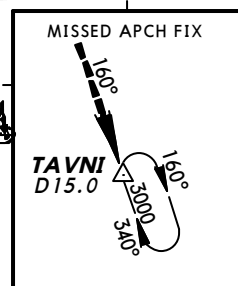
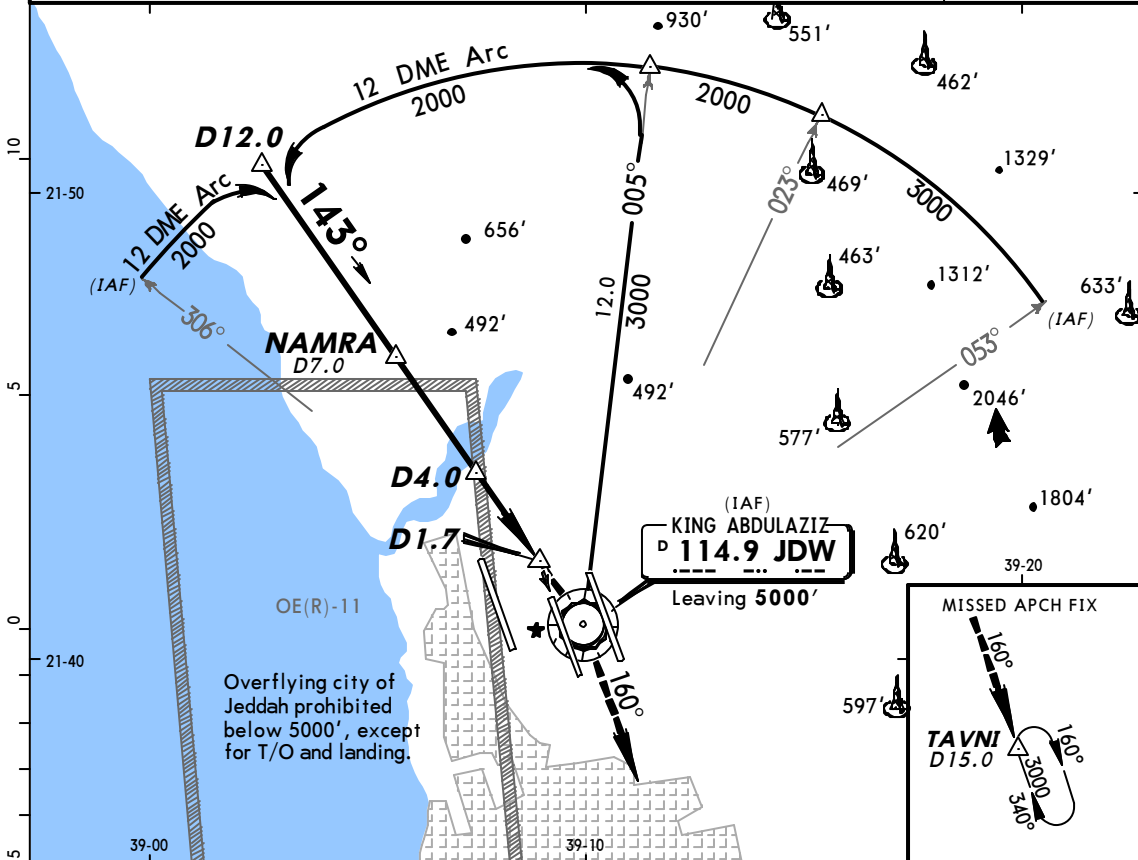
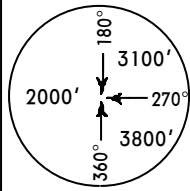


OEJN/JED
KING ABDULAZIZ INTL

JEPPESEN JEDDAH, SAUDI ARABIA
20 SEP 02 (13-1) Eff 3 Oct VOR DME Rwy 16C

ATIS 114.9	JEDDAH Approach(R) (Initial contact) 119.1	JEDDAH Tower 118.2	Ground 121.6
VOR JDW 114.9	Final Apch Crs 143°	Minimum Alt NAMRA 1700'	MDA(H) 420' (394')
MISSED APCH: Climb direct to VOR, then via R-160 outbound to 3000' to TAVNI/D15.0 and hold, or as directed.			Apt Elev 48' TDZE 26'
Alt Set: hPa		TDZ Elev: 1 hPa	Trans level: FL 150
		Trans alt: 13000'	MSA JDW VOR



ALSF-II	JDW 114.9	3000'	JDW 114.9
VASI	↑	RT	R-160

STRAIGHT-IN LANDING RWY 16C		CIRCLE-TO-LAND	
MDA(H) 420' (394')			
ALS out			
A		A	NOT AUTHORIZED
B	RVR 720m VIS 800m	B	
C		C	
D	RVR 1500m VIS 1600m	D	
			RVR 1800m VIS 2000m

AMEND 6

CHANGES: 1AF.

© JEPPESEN SANDERSON, INC., 2000, 2002. ALL RIGHTS RESERVED.